



ONE OF THE BIGGEST DATACENTERS IN THE CZECH REPUBLIC

**dual power supply
constant cooling by oversized air conditioner in N+1 mode
3x1 MW diesel unit
lockable racks**

SUPERHOSTING

ABOUT US



DATA CENTER LOCATION



LOCALIZATION AND SECURITY



DATA CENTERS AREA - IT HALLS



DATA CENTERS AREA - DIESEL UNIT



DATA CENTERS AREA - WAREHOUSE



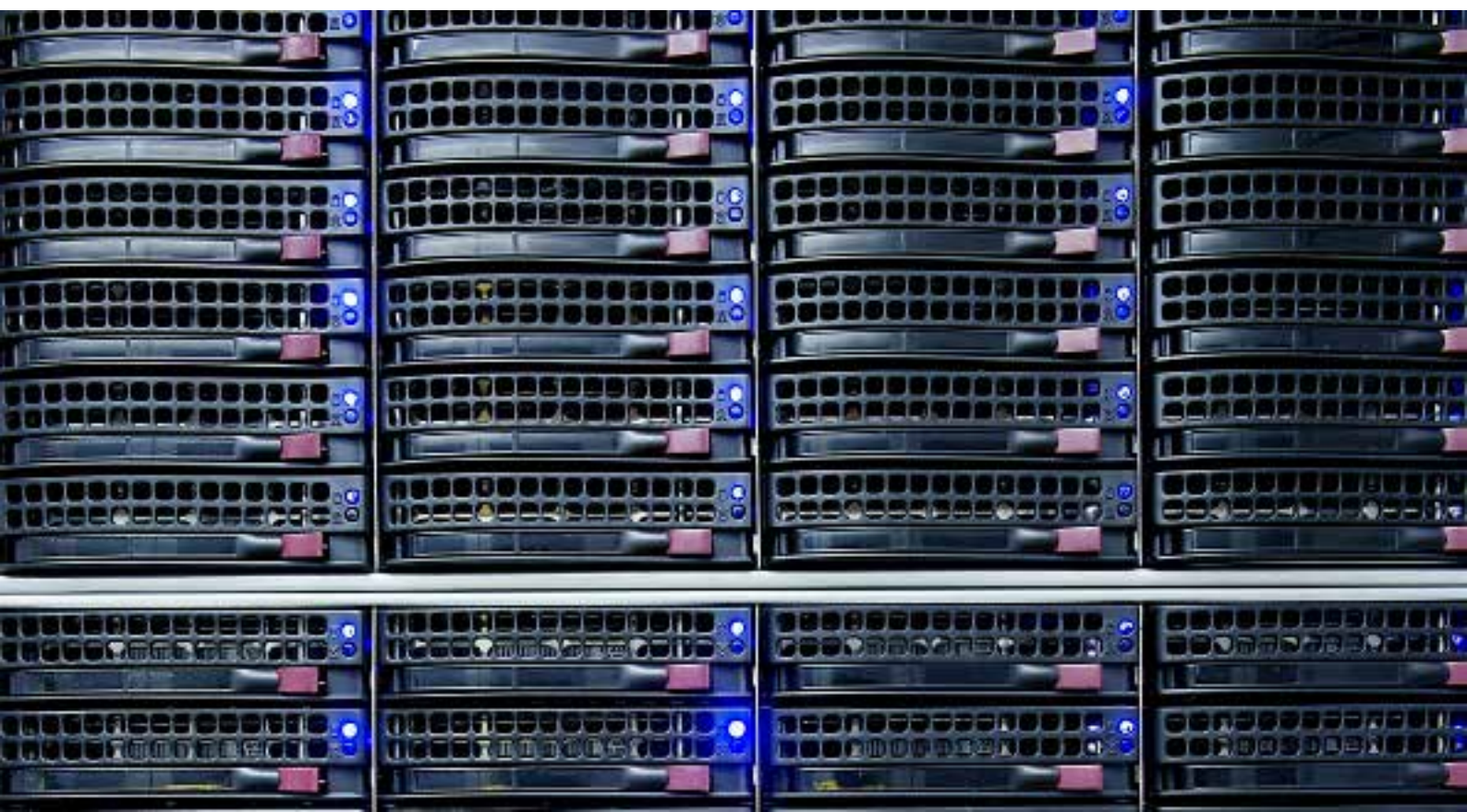
WHAT WE CAN DO



TECHNICAL SUPPORT



WHY SUPERHOSTING



WE DO ONLY WHAT WE KNOW THE BEST

Data center
Connectivity
Administration

Superhosting is one of the leading Czech hosting companies providing server solutions since 2004. Our results speak for us - on the Czech market we handle more than 30 % of Internet traffic of servers and we work for more than 20 % of the most visited websites.

We offer among the key services:

- hosting services
- administration
- connectivity



DATA CENTER LOCATION

SuperHosting has a strong base in the heart of Europe - in the capital city Prague in the Czech Republic. The data center is located in a renovated and isolated building in the industrial zone close to the center of Prague in the Malešice district.

cca 10km from the center of Prague
cca 30km from Vaclav Havel Prague International Airport
cca 9km from Prague main railway station

Tiskařská 10
Praha 10

EXCELLENT TRANSPORT ACCESSIBILITY

bus (181 and 183 - stop Perlit, 3 minutes from the building, 223 - stop Tiskařská, in front of the building)

tram (5 - stop Depo Hostivař, 5 minutes from the building)

metro (line A - stop Depo Hostivař, 7 minutes from the building)

LOCALIZATION AND SECURITY

LOCALIZATION

- industrial zone - Tiskařská 10, Praha 10
- 2nd floor with elevator to transport people and cargo
- reserved parking spaces for customers (more than 200 parking spaces)

BUILDING

- CCTV
- 24/7 security service
- access only to authorized persons
- non-flood zone

TECHNICAL BACKGROUND

- own CCTV
- access to individual IT halls only accompanied by technical support using a chip
- lockable racks

The current situation in the Czech Republic is calm in terms of cases of terrorism. The Czech Republic has not yet experienced anything that can be described as a terrorist attack.



DATA CENTERS AREA

IT HALLS

SuperHosting has 4 IT halls with a total capacity of more than 100 racks with capacity of 42U in each. We want to provide premium services, so we deal primarily with high technology, which means we can guarantee the servers to run smoothly.

TECHNICAL SPECIFICATION OF THE DATA CENTER

- cooling, air conditioning**
- constant, for all racks
 - to 2kW, to 3kW, to 6kW, to 8kW
 - overpressure double floor
 - oversized air conditioner in N+1 mode
 - dust free (filtration in air conditioning)
 - controlled level of humidity against the generation of static electricity (25-70 %)
 - temperature up to 21°C
- fire alarm system**
- FM200
 - clear, colorless and non-conductive gas
 - extinguishes fire in less than 60 seconds
 - without damage to IT equipment
- electrical energy**
- power up to 6 x 230V / rack
 - separately triggered in the cabinet of electricity
 - electric power distribution for every room is divided into separate sections
 - each section is a triggered isolator
 - fuse 3x16 A / rack
 - several varieties of rack power supply: 2x 10, 2x 13, 3x 16 or 6x13
 - UPS system mode N+1
 - 3x1 MW diesel unit
- racks**
- Rittal 42U
 - lockable
 - dimensions: 600 x 1000 x 2000 mm and 600 x 1200 x 2000 mm

Data center classification Tier3.

DATA CENTER AREA

DIESEL UNIT

In case the primary supply from Pražská energetika fails, a continuous power supply through 3 x 1 MW diesel unit is automatically triggered. Backup power is provided until the functionality of the primary power supply is restored.

FUNCTIONALITY OF DIESEL UNIT

- one time per month tested by a failure simulation of the primary energy supply
- up to 3 minutes of detecting failure of the primary source at all times until the restoration
- N+1 mode



DATA CENTER AREA WAREHOUSE

In SuperHosting we believe that customers are the priority and we constantly work on improving and complementing the services already provided. In addition, we have our own warehouse with hardware components, which means that we are able to solve a failure of the entire server almost immediately. Thanks to our warehouse we can guarantee the HW service within 2 hours from the detection of a failure.

STANDARD EQUIPMENT OF THE WAREHOUSE

- control units
- hard drives
- memory modules
- network interface controllers
- and more

There we also have about 30-50 functional and complete servers ready for connection. Our customers can also use our warehouse for temporary storage of customer servers or hardware components.



WHAT WE DO BEST

Every day, the sales team of Superhosting prepares a variety of customized offers and services with a pleasant approach. We try to fulfill customers wishes the best we can and pay special attention to the speed and quality of sales dialogue.

MAIN SERVICES – SERVER SOLUTION

- managed server
- virtually managed server
- dedicated server
- server hosting, rack hosting

OTHER SERVICES

10 Gbps ethernet port

- connection of connectivity 10 Gbps through one port
- advance line
- via fiber optic cables (single / multi mode unlimited data transfer)

Mass email sending

- fast, responsible
- with guarantee, in real time
- also includes the optimization of sending anti-SPAM filters, management and maintenance of the environment and others.



24/7 TECHNICAL SUPPORT

We want to be available for our customer anytime and anywhere. We have been providing technical support for 7 years, 24 hours a day, 7 days a week and 365 day a year. We don't want to change any time coverage, we feel that it should be like this.

All day and night our technical support deals with requests and regularly supervises the premises of the data center. Among other things, the state of the air conditioning, power utilization and connectivity are checked actively and frequently.

HOW TO CONTACT OUR TECHNICAL SUPPORT

- telephone
- e-mail
- online

Try our technical support right now and send your request - for example, restarting servers, change of HW or just connection to KVM.

DON'T HESITATE TO CONTACT US

+420 296 826 299

telehouse@superhosting.cz



WHY SUPERHOSTING

- high-quality services for a great price
- professional approach to the customer
- perfect technical parameters of the data center
- 24/7 qualified technical support
- individual customized offer includes service with minimum commitment
- storage service with guarantee within 2 hours from failure detection
- possibility of placing/renting of servers within 24 hours from an order

